



PROGRAMS & PARTNERSHIPS
QUARTERLY REPORT



**FOOD SYSTEM
VISION PRIZE**

A photograph of a person's hands holding a large bunch of fresh carrots and beets. The carrots are bright orange with green tops, and the beets are dark red with green leaves. The person is wearing a grey long-sleeved shirt and khaki pants. The background is a lush green field of crops. A dark teal rectangular box is overlaid on the image, containing the text "COLORADO FOOD CHAIN" in white, bold, uppercase letters.

**COLORADO
FOOD CHAIN**



**INNOVATION
ECOSYSTEM**

A photograph of a person carrying a young child on their shoulders in an orchard. The person is wearing a maroon sweater, and the child is wearing a white shirt and denim jeans. They are surrounded by green apple trees with some fruit visible. In the background, there are trees with autumn foliage in shades of yellow and orange under a grey, overcast sky. A teal rectangular box is overlaid on the center of the image, containing the text "GROWING YOUNG MINDS".

GROWING YOUNG MINDS

A vibrant graffiti studio with colorful murals and art supplies. The room features concrete walls covered in graffiti, including a large mural of a hand and another of a colorful face. There are several red chairs, a table, and various art supplies like spray cans and a green crate on the floor. A window on the right side shows greenery outside. The ceiling has exposed pipes and lights.

EXPERIENCE TO IMPACT

A person wearing a white protective suit, a white hood, and yellow gloves is working with beehives in a field. The person is holding two clear plastic containers, one of which contains a honeycomb frame. The background shows several white beehives in a grassy field with green foliage. A teal rectangular box is overlaid on the image, containing the text "BETA PROGRAMS" in white, bold, uppercase letters.

BETA PROGRAMS



YOU
ARE
HERE

Come in We're
OPEN

BETA PROGRAMS

WE START NOW.

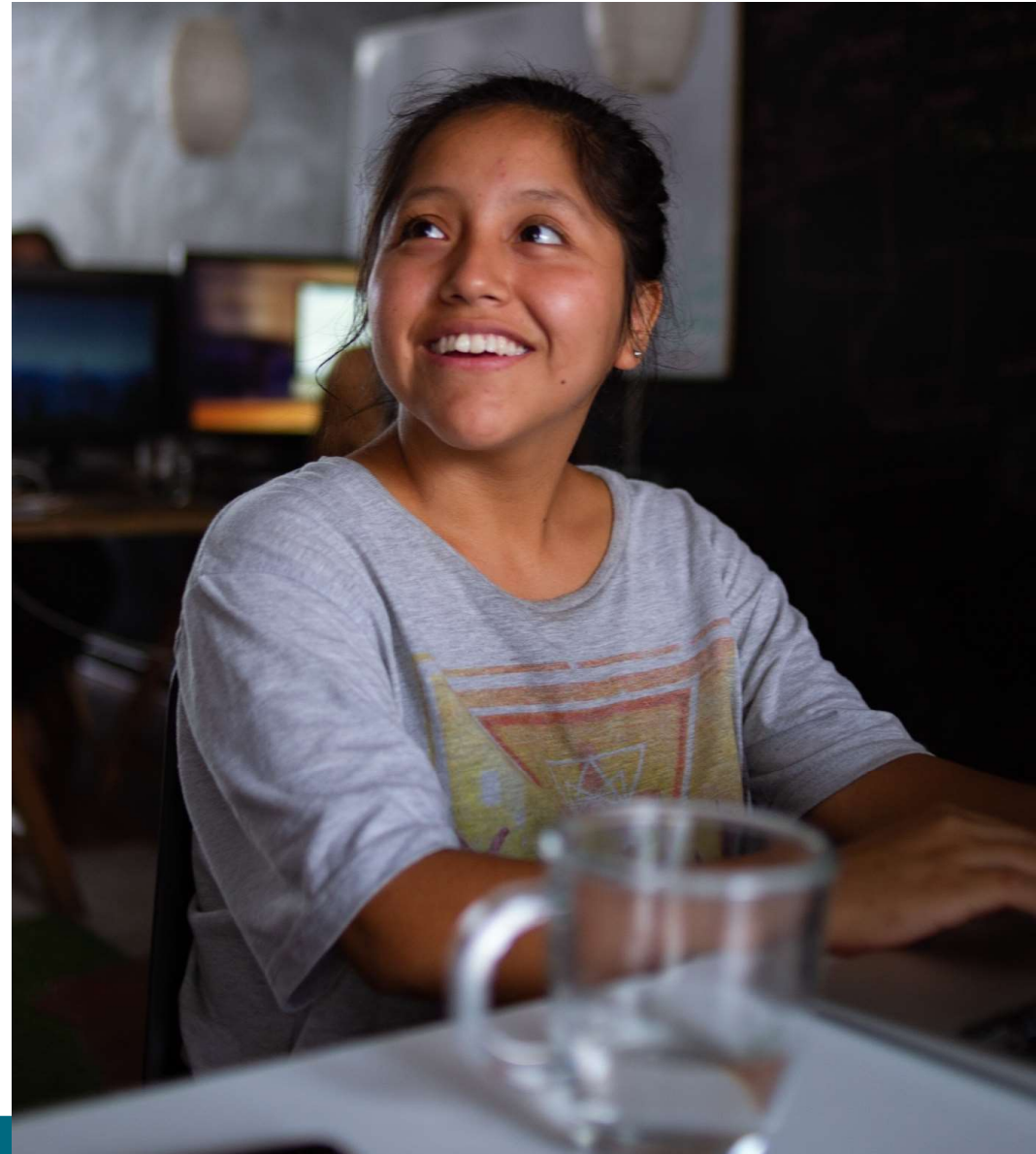
- Impatient for impact
- Hungry to learn

WE START SMALL.

- Scrappy by design
- Test into success

WE START TOGETHER.

- Centered in community
- Powered by partners



INITIATIVES & PROGRAM CONCEPTS

COLORADO FOOD CHAIN

- Cooking, Gardening & Nutrition Classes
- Farmers Market

FOOD AND AGRICULTURE INNOVATION ECOSYSTEM

- Digital Content & Knowledge Sharing
- Experimental Land Lab



GROWING YOUNG MINDS

- Ag-Science Apprenticeships
- Out-of-School Programming

EXPERIENCE TO IMPACT

- Cooking, Gardening & Nutrition Classes
- Community-Driven Arts Programming

RURAL-URBAN ART EXCHANGE

Initiative & Concept:
Experience to Impact
Community-Driven Arts Programming

Partners:
Some Girls and a Mural
Limon Public School
Bruce Randolph School

Future Potential:
Expand program statewide and display
artwork annually on campus.



CONTAINER FARM INTERNSHIP

Initiative & Concept:

Food and Ag Innovation Ecosystem

Experimental Land Lab

Partners:

Metro Caring

Future Potential:

Community container garden and
production farm in the north yards.



AG PATHWAY PROTOTYPE

Initiative & Concept:

Growing Young Minds

Ag-Science Apprenticeships

Partners:

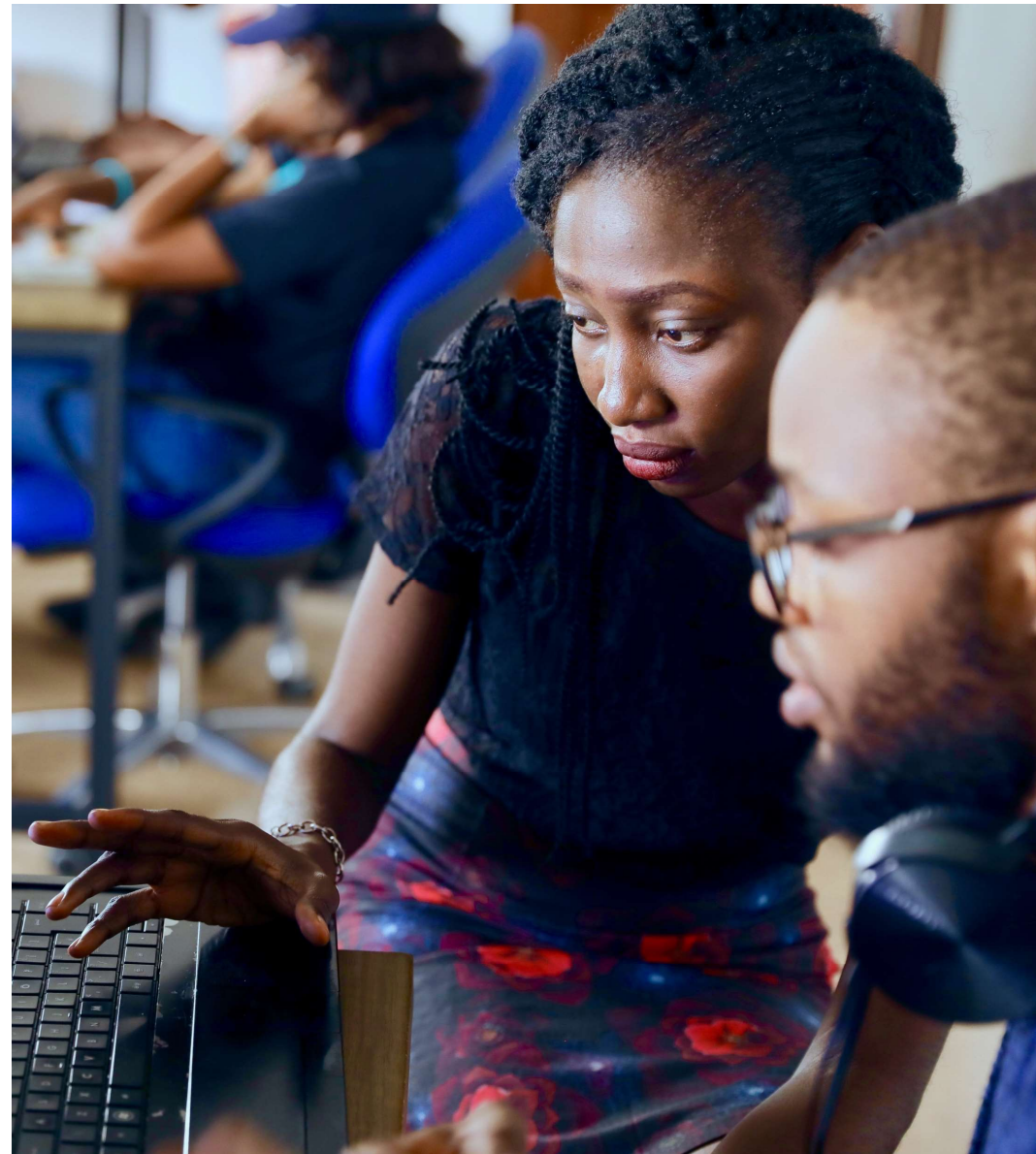
Career Wise

Together We Grow

Spur

Future Potential:

Robust cluster of food and ag apprenticeships for young adults.



SUMMER MEAL SITE

Initiative & Concept:
Colorado Food Chain
Farmers Markets

Partners:
Hunger Free Colorado
Colorado Fruit & Vegetable Growers
Association

Future Potential:
Colorado Proud products featured on
campus plazas and visitors' plates.



HANDS-ON COOKING

Initiative & Concept:

Colorado Food Chain

Cooking, Gardening & Nutrition Classes

Partners:

CSU Extension - FNEP

Local Elementary School

Future Potential:

Continuous culinary education curriculum
landing in Spur's food lab.



BILINGUAL STARTUP BASICS

Initiative & Concept:

Food and Ag Innovation Ecosystem

Digital Content & Knowledge Sharing

Partners:

Small Business Development Center

ESG Business Alliance

Future Potential:

Local entrepreneurs operate thriving businesses on and around campus.



PLAY AND LEARN ECE GROUP

Initiative & Concept:

Growing Young Minds

Out-of-School Programming

Partners:

Mile High United Way

La Piñata del Aprendizaje

Future Potential:

Affordable ECE options near campus
connecting kids to food and nature.





QUESTIONS?

16 oz.

from
Backyard Bees
5715 Gilkey Ave., B. Edison, Wa. 98232